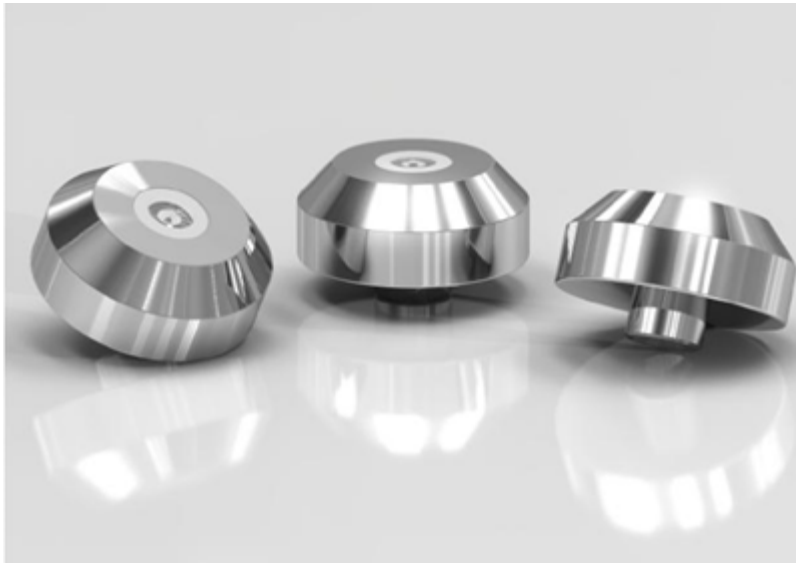




Type 2822



Standard insert-style sapphire waterjet orifice assembly used in abrasive or pure water cutting and blasting applications.

Our sapphire orifice jewels are manufactured using a proprietary polishing process to ensure consistent quality, high performance, and long life.

- .375" (9,5mm) head diameter
- 49° sealing angle
- stainless steel mount
- for use up to 60.000 psi (4200 bar)
- laser marked orifice size
- most common sizes stocked

Specifications

Part No. Ordering Format	Standard Orifice Sizes
2822-XX (XX= orifice size)	.004" — .032"
Plug Part No.	Additional Sizes Available
2939-0	.033" — .050"

Salomon Jetting Parts B.V.

Tel : +31(0)88 126 1900

www.sjpbv.com